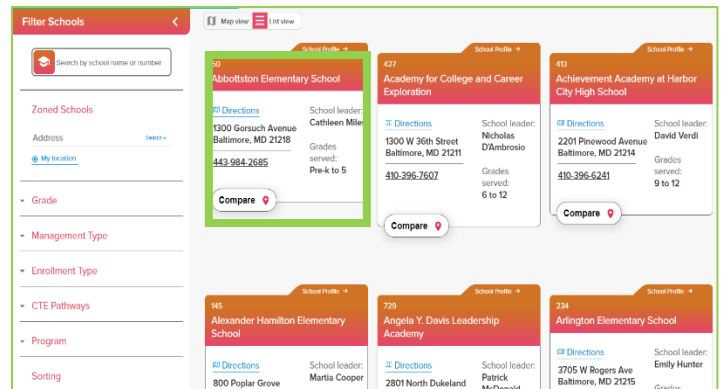
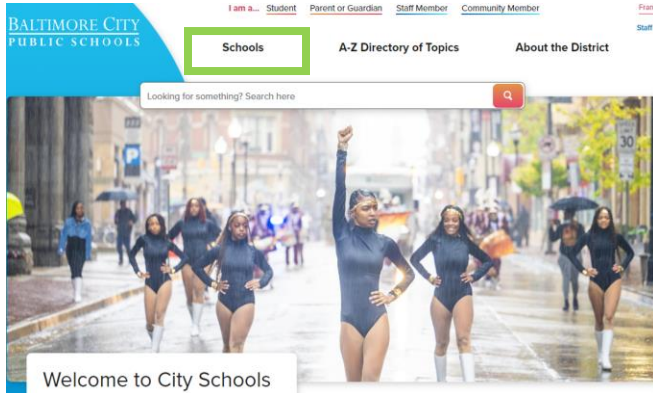
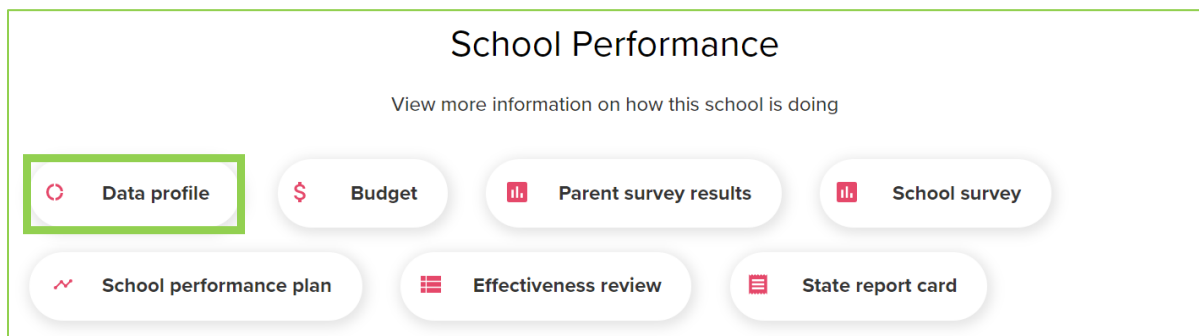


Digital School Data Profile – Quick Reference Guide

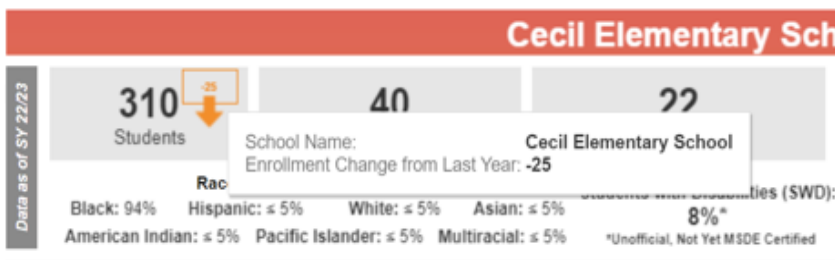
- In your browser, open City Schools website (<https://www.baltimorecityschools.org/>).
- On City Schools website homepage, Click on “Schools”. Search by school name or school number then click on the school of your choice.



- Once on an individual school page, scroll down until you find “Data Profile”. Click on it and you will be redirected to the Digital School Profile on Tableau Online.

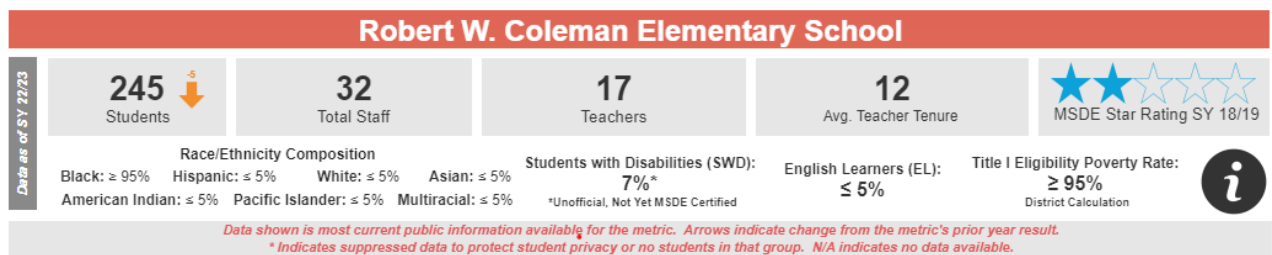


Quick Tips

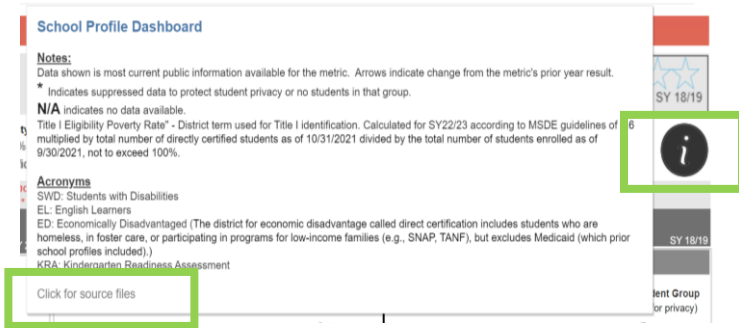


Hovering your pointer/mouse over a data field in the dashboard provides additional information and detail. This can be helpful when the dashboard can't display a label because of space limitations.

School Information: This is the top section of the Digital School Profile, providing general information for each school including:



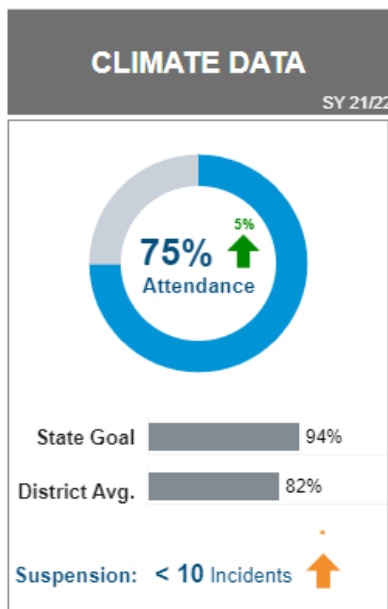
- (1) Enrollment – Number of students enrolled at the school as of September 30 of SY 22/23. Arrow shows movement compared to last year’s enrollment number. E.g. arrow pointing down with number 5 means that there are 5 fewer students enrolled in the school during SY 22/23 than SY 21/22.
- (2) Number of Staff – Number of all employees in the school, instructional, service, and administrative staff as of SY 22/23. Instructional staff includes teachers, instructional aides, paraeducators, and other instructional support roles such as library, guidance, ESOL, Special Education, Citywide, etc. Service staff includes custodial, cafeteria, and building maintenance employees. Administrative staff includes principals, assistant principals, and administrative assistants.
- (3) Number of Teachers* – Number of teachers in service at the school as of SY 22/23. **Official figures are based on full-time teachers as of 10/15/2022.*
- (4) Average Teacher Tenure* – Average teacher tenure or years of service.
- (5) MSDE Star Rating – School star rating by MSDE as of SY 18/19. This is the most recent update of this information and remains in effect currently.
- (6) Race/Ethnicity Composition - % of enrollment by race/ethnicity.
- (7) Students with Disabilities (SWD) - % of enrollment that are students with disabilities.
- (8) English Learners (EL) - % of enrollment that are English learners.
- (9) Title I Eligibility Poverty Rate - District term used for Title I identification. Calculated for SY22/23 according to MSDE guidelines of 1.6 multiplied by total number of directly certified students as of 10/31/2021 divided by the total number of students enrolled as of 9/30/2021, not to exceed 100%.
- (10) Charter Renewal Ratings – summary rating regarding renewal of the charter or contract for an operator-run school. Hover and follow the link for more details.



Information Icon: Hover on the icon to show additional information about the dashboard. Click on the icon to access link Source files from the City Schools Data site. Public source files are available for:

- (1) MSDE Report Card
- (2) Current and Historical Enrollment and Demographic Data
- (3) Current and Historical Attendance Data

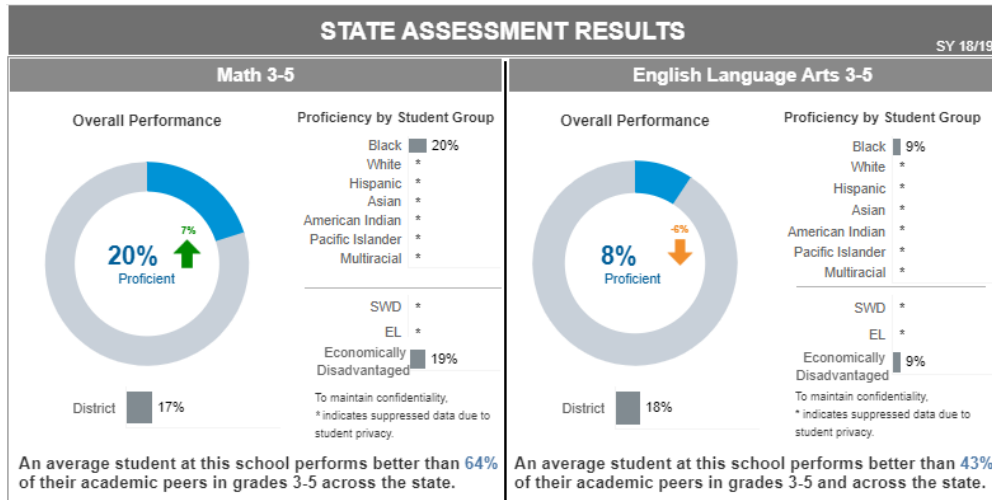
- (4) PARCC data file: Historical school-level PARCC results since SY14/15.
- (5) Kindergarten Readiness Assessment (KRA) Data
- (6) Graduation Data: Selected year Adjusted Cohort Graduation and Dropout Rate Data.
- (7) College Enrollment Data: Selected year college readiness.
- (8) SAT and Historical SAT files: Highest Average SAT Scores Among Diploma Track Graduates for SY21/22 and for the prior year.
- (9) City Schools Parent Survey Source File
- (10) MSDE Student Survey Source File



Climate Data: This view displays details of different attendance indicators.

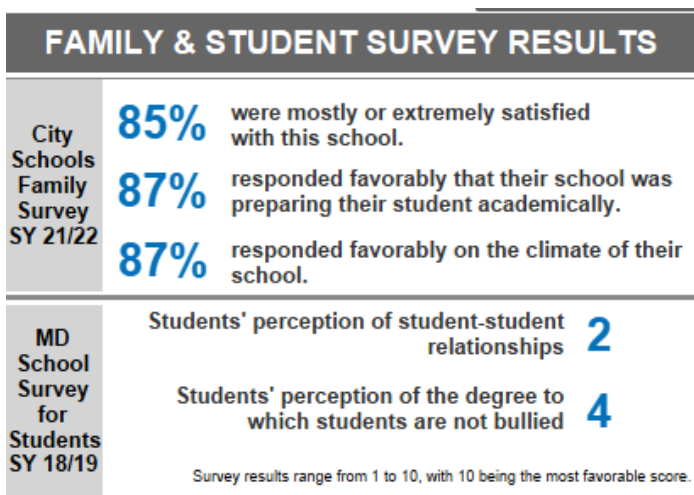
- (1) The donut shows cumulative attendance rate of SY 21/22.
- (2) State Attendance Goal – consistent rate at 94%.
- (3) District Average Attendance Rate – average attendance rate across City Schools for SY 21/22.
- (4) Out-of-School Suspension – count of out-of-school suspension incidents where arrow shows trend compared to last year’s suspension incident count. An asterisk * is displayed when suspension counts are less than or equal to 10 to protect student privacy.

State Assessment Results: This view displays the most current Maryland assessment results by grade band. The view is divided into Math (on the left) and English Language Arts (on the right). Information in each section includes:



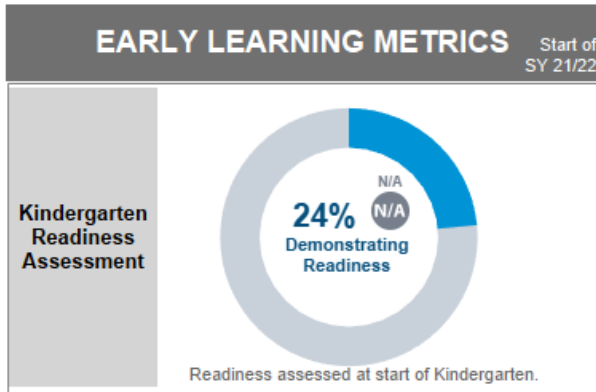
- (1) Overall Performance Donut – % of students who are proficient in that subject area (MCAP or PARCC score of 4 or 5), with arrow indicating trend compared to last year’s proficiency and the number indicating % change.
- (2) Proficiency by Student Group - % of students (in a student group) who are proficient in that subject area (MCAP or PARCC score of 4 or 5).
- (3) District Performance - % of students in the district (in the grade band) who are proficient in that subject area (MCAP or PARCC score of 4 or 5).
- (4) Student Growth Percentile when compared to students with similar performance across state (hover for more details).

Family & Student Surveys Results which include most recent results for:



- (1) Annual City Schools Family Spring Survey
- (2) Maryland School Survey among Students – Most recent Student survey from MSDE.

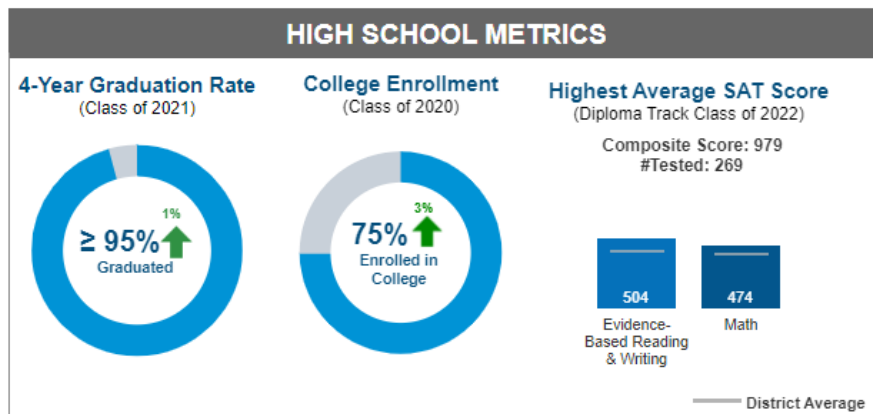
Early Learning Metrics:



This view displays most recent Kindergarten Readiness Assessment result. Result in donut shows % of Kindergarten students who demonstrated readiness for Kindergarten at the beginning of the school year. The assessment was not administered in SY20/21 so no change vs prior year is available.

Note: this section is only available for schools that serve kindergarten students.

High School Metrics: This view displays most recent high school metrics including:



(1) 4-Year Graduation Rate - % of 12th graders graduated.

Notes: Data included for students entering 9th grade in Fall 2017 (Cohort 2018/Class of 2021).

Includes students who graduated from City Schools with a regular Maryland High School Diploma.

(2) College Enrollment - % of 12th graders (class of 2020) who reported as enrolled in college in Fall of 2020, the most recent public data available.

Notes: Fall enrollment defined as an enrollment event at a postsecondary institution participating with the NSC between Aug 1 and Dec 31 after graduation date, unless enrollment event ended before Sept 1.

Students who graduated in the summer or fall had two windows of opportunity for fall enrollment: both immediately after graduating, as well as during the fall months the next year.

(3) Highest Average SAT Scores Among Diploma Track Graduates

a. # of students taking the SAT and their Highest Average Composite Score of all SAT attempts by the student.

b. Highest Average score for each section (EBRW & Math), with a line indicating District Average for each section.

Notes: SAT results from students who graduated from City Schools with a regular Maryland High School Diploma in 2022.