



Family Engagement Virtual Office Hours

**Teachers and Staff:
Stay Connected | Get Answers | Share Resources | Feel Supported**

Monday

9:30 a.m. to 10:30 a.m. and 4:00
p.m. to 5:00 p.m.

[Access to Link and Details](#)

+1 443-961-1488 United States,
Baltimore (Toll)

Conference ID: 935 555 572#

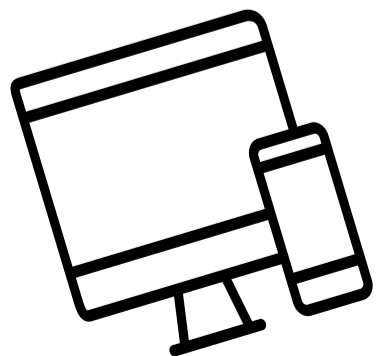
Wednesday

9:30 a.m. to 10:30 a.m. and 4:00 p.m.
to 5:00 p.m.

[Access to Link and Details](#)

+1 443-961-1488 United States,
Baltimore (Toll)

Conference ID: 821 327 950#



To help us provide the right supports, please complete this quick survey to share your questions/needs; <https://forms.gle/MwGuxJns7879BSV38>

Can't join during the office hours? Send us an email at engagement@bcps.k12.md.us or contact the FCE Specialist assigned to your school directly for support. We look forward to connecting with you.